

For which numbers below is 432 divisible by?

2, 3, 4, 5, 6, 9, 10

List all of the factors of 52.
(t-chart)

1	52
2	26
4	13

1, 2, 4, 13, 26, 52

For which numbers below is 675 divisible by?

2, 3, 4, 5, 6, 9, 10

List the first 10 multiples of 7.

7, 14, 21, 28, 35, 42, 49, 56, 63, 70

List all the prime numbers between 15 and 30.

15 16 (17) 18 (19) 20 21 22 (23) 24 25
26 27 28 (29) 30

17, 19, 23, 29

Kenny has a bag of candy with 30 Airheads, 54 Skittles, and 42 Jolly Ranchers. For his birthday party, Kenny wants to repackage the candy into smaller gift bags so that each bag has the same combination of candy.

what is the greatest # of bags
a) ~~How many bags will~~ Kenny be able to make?

b) How many of each candy will be in each bag?

30	54	42	
5	9	7	5 Airheads 9 Skittles 7 Jolly Rancher

GCF: 6 bags

Sarah's Shipping and Robert's Mail Services both ship packages. Sarah's trucks will only carry loads of 18 packages. Robert's trucks will only carry loads of 12 packages. If both businesses ended up shipping the same number of packages this morning, what is the minimum number of packages each must have shipped? LCM

6	18	12
1	3	2

6 · 1 · 3 · 2

36 packages

A full moon occurs every 30 days. If the last full moon occurred on a Friday, how many days will pass before a full moon occurs again on a Friday?

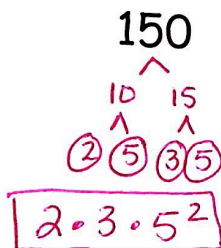
LCM

1 | 30 7

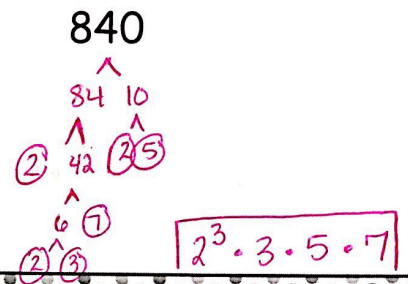
30 · 7 = 210 days

→ Friday → Friday
7 days

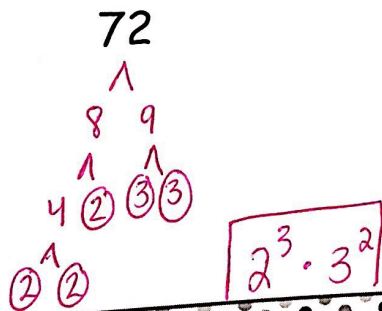
Write the prime factorization of:



Write the prime factorization of:



Write the prime factorization of:



Are the numbers prime or composite? How do you know?

-81 composite $8+1=9 \rightarrow$ multiple of 3

-125 composite Ends in a 5

-67 prime